



# ***Mycoplasma pneumoniae***

**Pornumpa Bunjoungmanee  
Division of Infectious  
Department  
Pediatrics Department  
Thammasat University Hospital**

# Outline

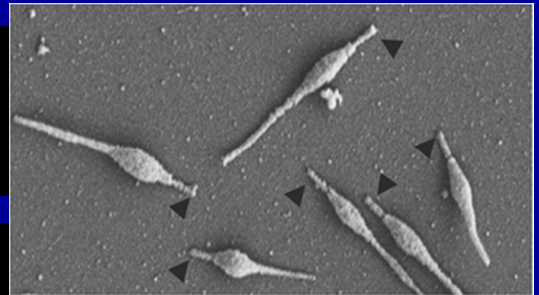
- *Mycoplasma pneumoniae*
  - : pathogen
  - : pathogenesis
  - : epidemiology
  - : clinical features
  - : investigation
  - : treatment
  - : prevention

**Pathogen**

## Pathogen

- Family Mycoplasmataceae
- 5 genera: Mycoplasma, Ureaplasma, Acholeplasma, Anaeroplasm, Asteroloplasma.
- *Mycoplasma pneumoniae*
- *Mycoplasma hominis*
- *Mycoplasma genitalium*
- *Ureaplasma urealyticum*

## Pathogen



- *M. pneumoniae*
- The **smallest**, self replicating prokaryotes
- 120-150 nm, pleomorphism
- Human are the only known natural host
- **Absent** of the cell wall
- Insensitive to penicillin and other  $\beta$ -lactam antibiotics
- Does not take up Gram stain.