



Invasive Salmonellosis ...A Forever Frenemy!



รศ.พญ. วนัทปรีญา พงษ์สามารถ
คณะแพทยศาสตร์ศิริราชพยาบาล

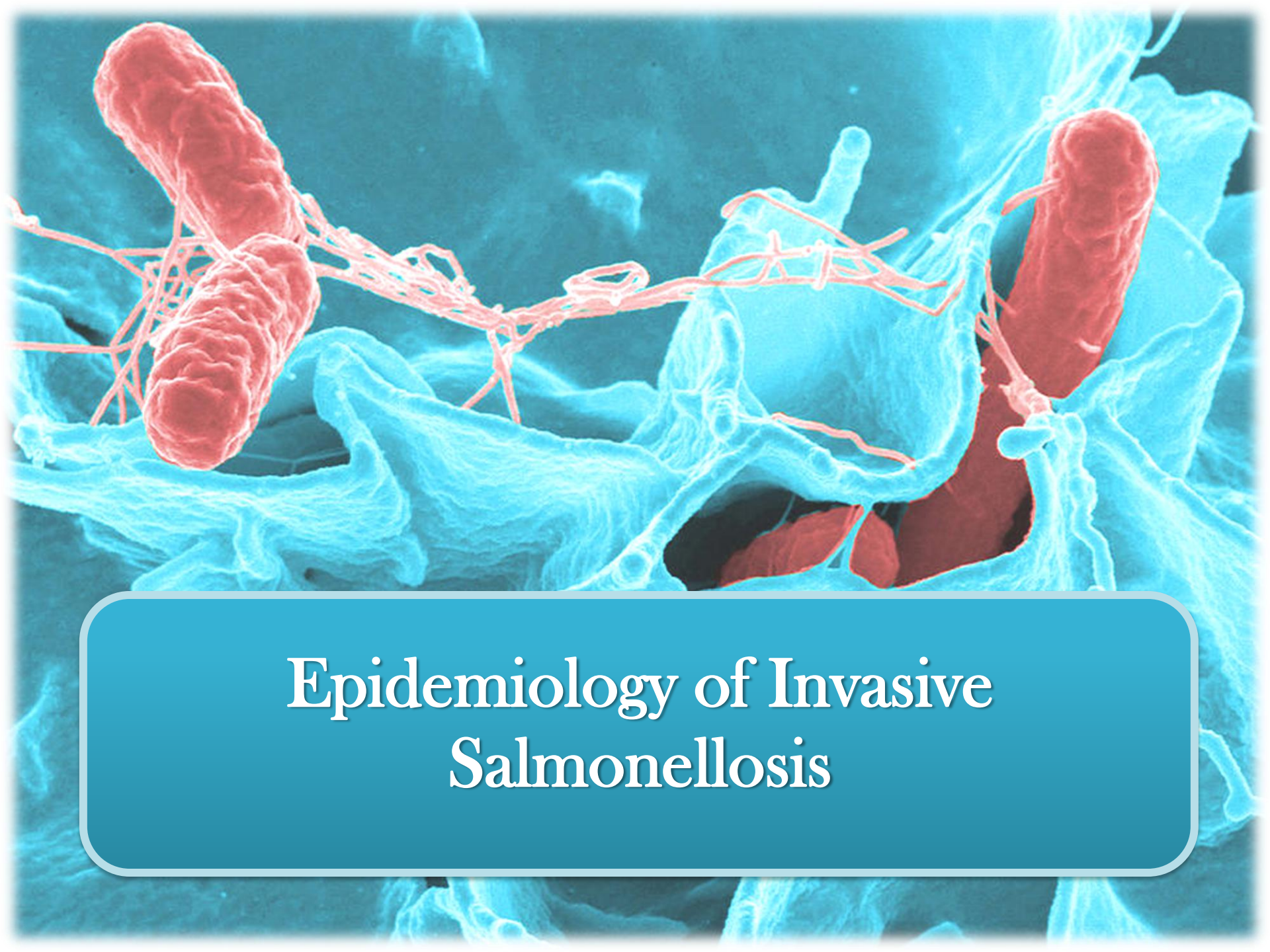
Outline

- **Epidemiology**
- **Clinical presentation**
- **Antimicrobial susceptibility and the update CLSI guideline**
- **Treatment**
- **Prevention**

Clinical Manifestations of *Salmonella* Infections in Humans

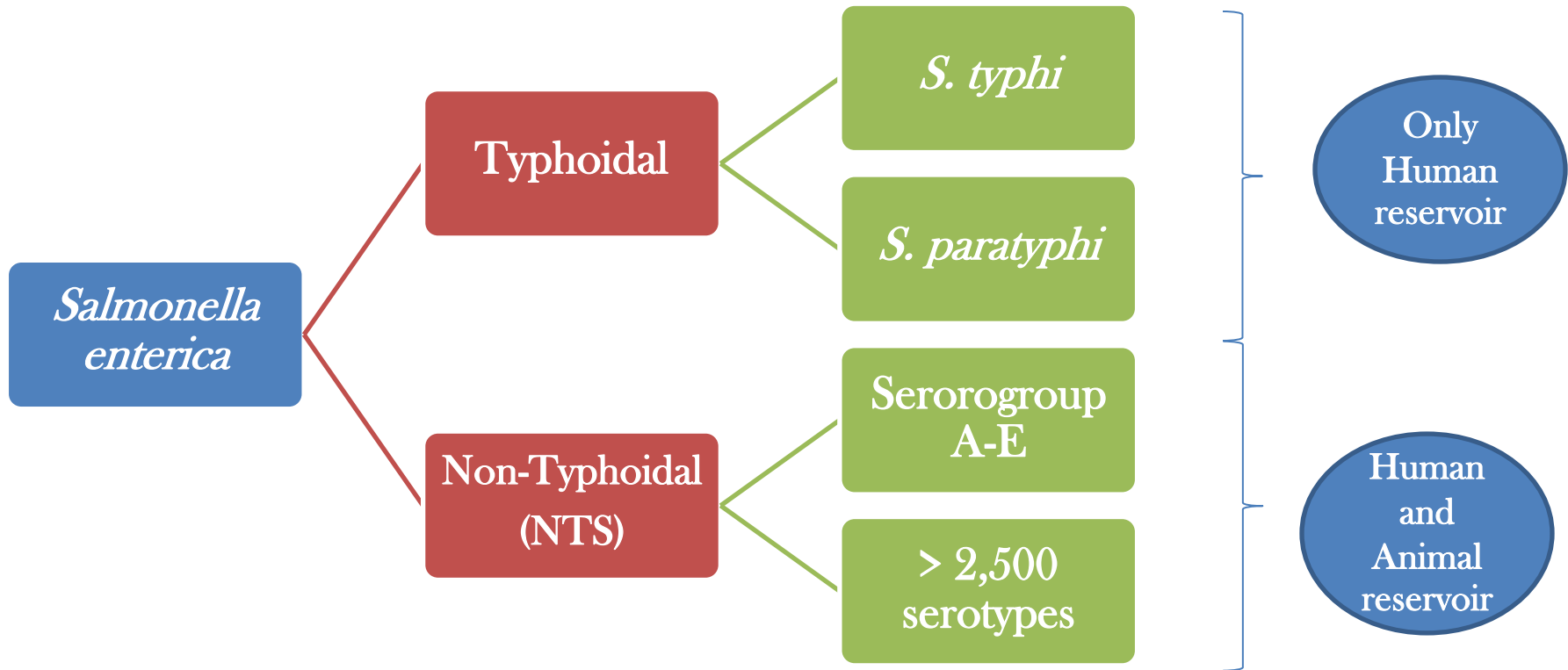
- **Gastroenteritis**
- **Enteric fever (*S. typhi* and *S. paratyphi*)**
- **Bacteremia and endovascular infection**
- **Focal infections eg. meningitis, septic arthritis, osteomyelitis or abscess**
- **An asymptomatic chronic carrier state**

**Invasive
Salmonellosis**



Epidemiology of Invasive Salmonellosis

Salmonella enterica



100% of invasive salmonellosis at Siriraj Hospital (2006-2011, n = 80) and 98.6% at QSNICH (2001-2010, n = 229) were NTS!!!

1. Saihongthong S, Phongsamart W, et al. 15th International Congress on Infectious Diseases Bangkok , Thailand, June 13-16 , 2012.
2. Punpanich W, et al. *Pediatr Infect Dis J* 2012;31(8):e105-10.