



# Diagnostic Tests *Clostridium difficile* toxin

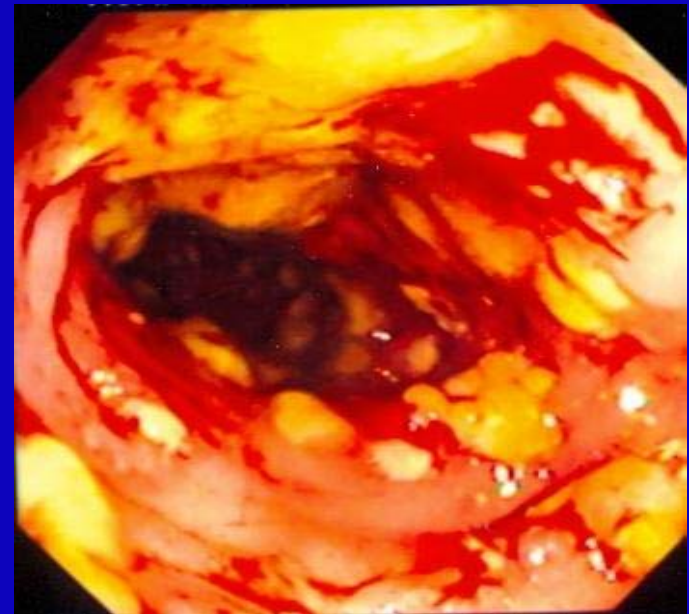
พญ. พรอำภา บวรจงมณี  
ภาควิชากุมารเวชศาสตร์  
คณะแพทยศาสตร์  
มหาวิทยาลัยธรรมศาสตร์

# TOPICS

- Acute phase reactants
- Non structural protein 1 (NS1) for dengue
- Galactomannan
- *Clostridium difficile* toxin

# *Clostridium difficile* toxin

- *C. difficile*
  - An anaerobic, gram positive, spore-forming, toxin-producing bacillus
- Spores are resistant to heat, acid, antibiotics and most antiseptics
- toxin A (enterotoxin)  
toxin B (cytotoxin)
- BI/NAP1/027



# *Clostridium difficile* toxin

- **Clinical spectrums of *C. difficile* infection**
  - Asymptomatic carriage
  - *C. difficile* associated diarrhea
  - Pseudomembranous colitis
  - Fulminant colitis
- **Watery diarrhea** is the cardinal clinical symptom of *C. difficile* infection
- Rarely, ileus and colonic distension with minimal or no diarrhea

# *Clostridium difficile* toxin

- **Risk factor for disease**

- Antimicrobial therapy
- Repeated enema
- Gastric acid suppression therapy
- Prolonged NG tube intubation
- Gastrostomy and jejunostomy tubes
- Underlying bowel disease
- GI tract surgery
- Renal insufficiency
- Humoral immunocompromise