



สมาคมโรคติดเชื้อในเด็กแห่งประเทศไทย
Pediatric Infectious Disease Society of Thailand



MAHIDOL
UNIVERSITY
Wisdom of the Land

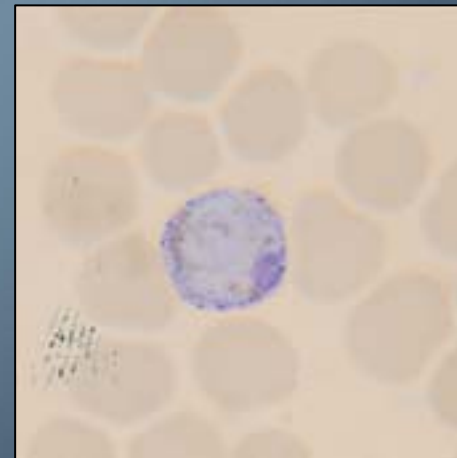
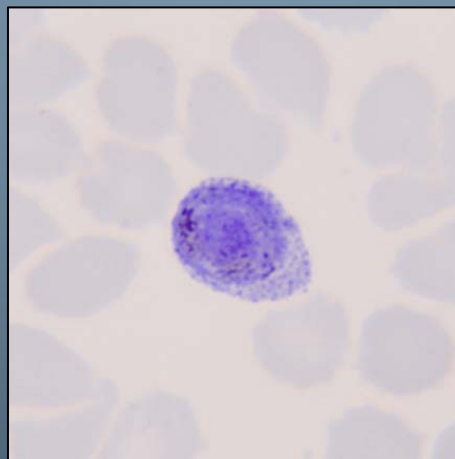
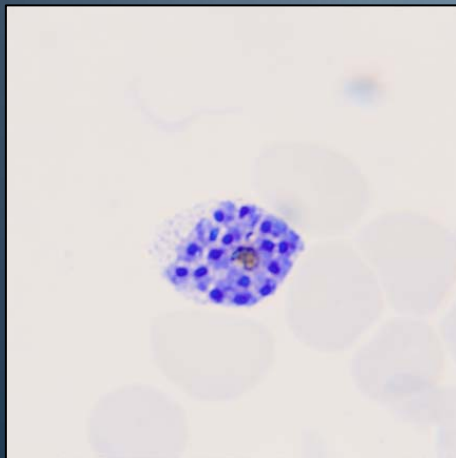
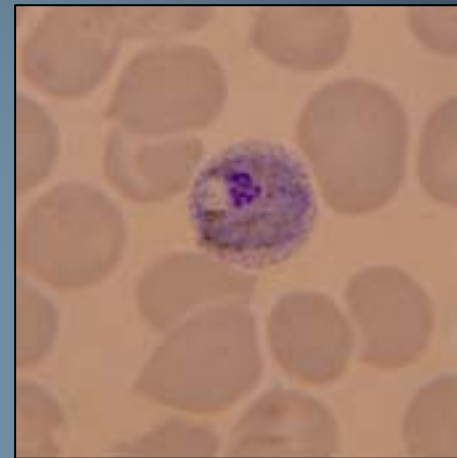
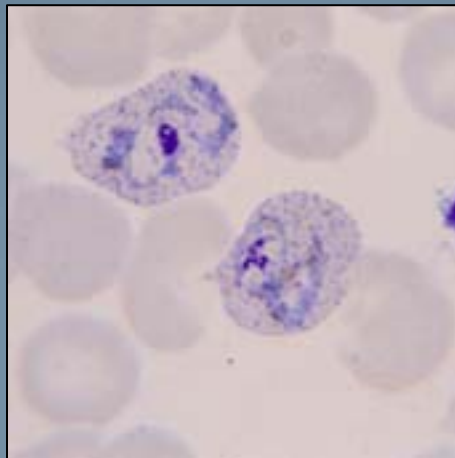
NEGLECTED TROPICAL DISEASES; MALARIA

ผ.ศ. พ.ญ. วังรี โชคจินดาชัย
ภาควิชากุมารเวชศาสตร์เขตร้อน
คณะเวชศาสตร์เขตร้อน
มหาวิทยาลัยมหิดล

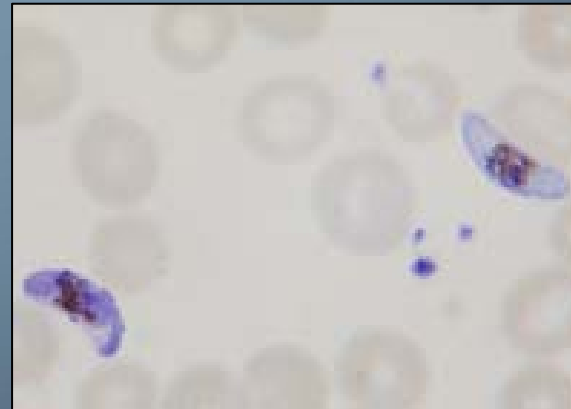
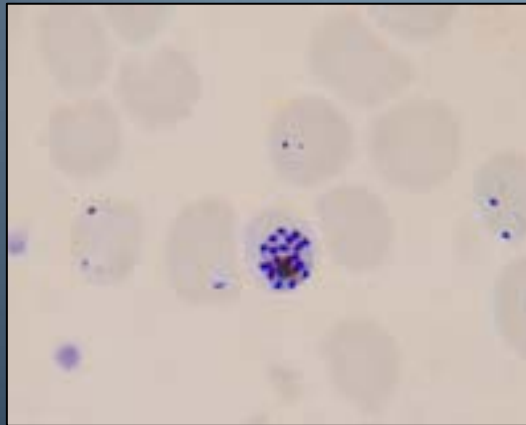
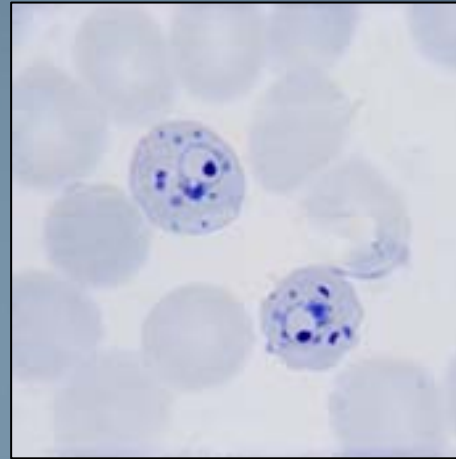
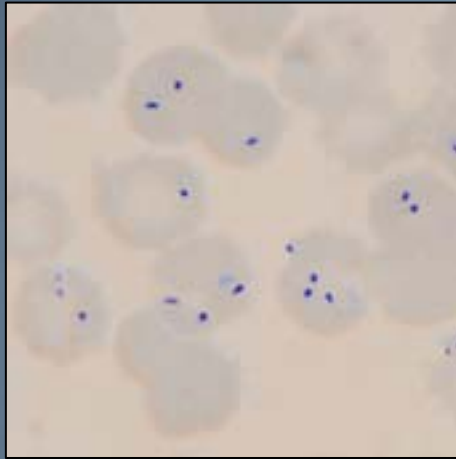
Update on Pediatrics Infectious Diseases 2013
27/02/2013 - 1/03/2013

1-Mar-13

Plasmodium vivax.



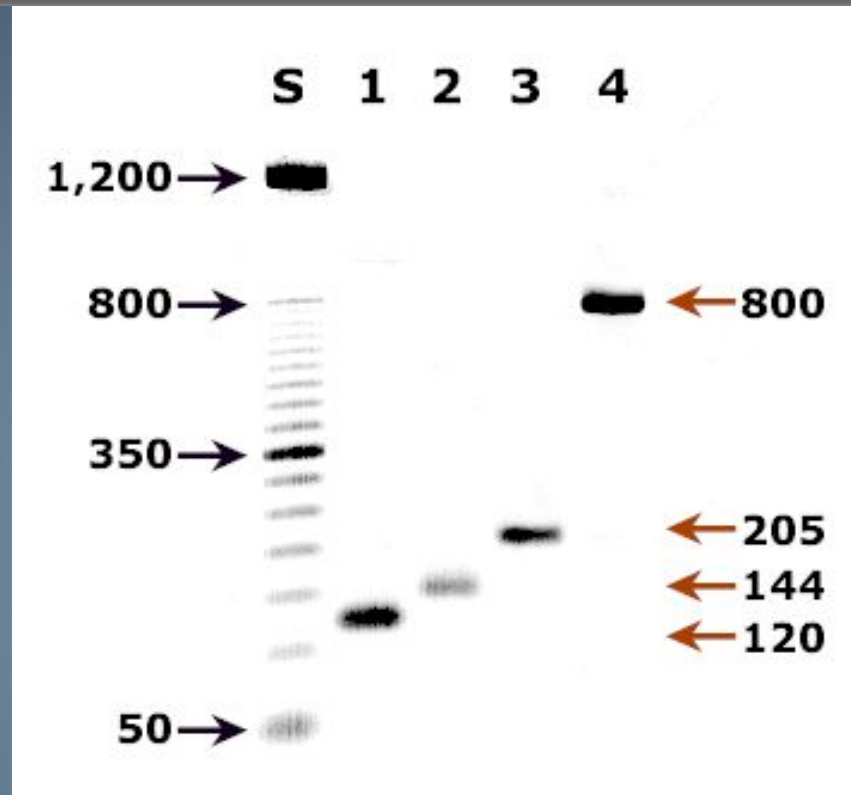
Plasmodium falciparum



Thin blood smear finding

Malaria Parasite	Pf	Pv	Po	Pm	Pk
Enlarged RBC	-	+	+/-	-	-
Oval rbc crenated	-	-	+	-	-
Schuffner's dots	-	+	+	-	-
Maurer's dots	+	-	-	-	-
Ziemann's dots	-	-	-	+	-
Sinton and Mulligan's dots	-	-	-	-	+
Multiple infections	+	rare	very rare		+/-
All forms	-	+	+	+	+
Double chromatin dots	+	rare	-	-	+/-

Detection of Malaria by PCR



A: Agarose gel (2%) analysis of a PCR diagnostic test for species-specific detection of *Plasmodium* DNA. PCR was performed using nested primers of Snounou et al.¹

Lane S: Molecular base pair standard (50-bp ladder). Black arrows show the size of standard bands.

Lane 1: The red arrow shows the diagnostic band for *P. vivax* (size: 120 bp).

Lane 2: The red arrow shows the diagnostic band for *P. malariae* (size: 144 bp).

Lane 3: The red arrow shows the diagnostic band for *P. falciparum* (size: 205 bp).

Lane 4: The red arrow shows the diagnostic band for *P. ovale* (size: 800 bp).